

ADVANCED COURSES 2023 – 2024

cE3c's Advanced Courses are an excellent opportunity for professional enrichment, focusing on various scientific domains through approaches that cross theory and practice.

Apply until January 12, 2024

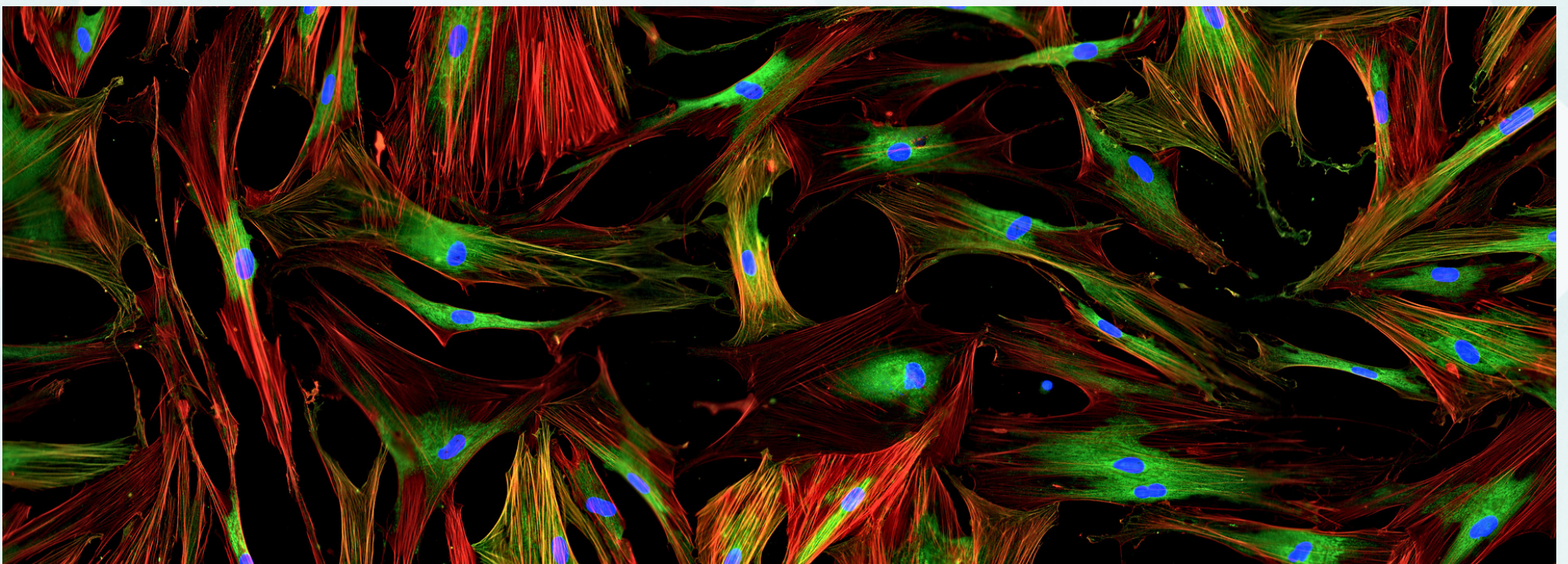
February 12 – 16, 2024 | FCUL Microscopy Facility, PT Platform for Bioimage

Hands-on training on protein and glycan detection by fluorescence microscopy

Ana Rita Carlos ¹, Luís Marques ¹ & Romana Santos ²

¹ cE3c – Centre for Ecology, Evolution and Environmental Changes, Faculty of Sciences of the University of Lisbon (FCUL)

² MARE – Marine and Environmental Sciences Centre



WHAT YOU WILL LEARN

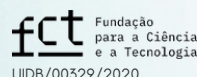
This 5-day course offers to the participants a light microscopy course focusing on fluorescence microscopy techniques applied to the detection of proteins and glycans in tissue samples and cell cultures. Proteins are a direct product of genes, while glycan synthesis does not require a template. Together proteins and glycans are key elements that contribute to the cellular and organismal diversity and provide the substrate for evolution. The course integrates theoretical lectures (~50%) with hands-on experiments, practical experience at the microscope and image analysis sessions (~50%), focused on cell biological studies.

FEE

1st year PhDs at FCUL	Free
BIODIV PhD students	Free
1st year PhDs BEAG & SC	Free
Other PhDs at cE3c	50,00€
PhDs at CFE	80,00€
MSc & ≥ 2nd year PhDs at FCUL	125,00€
Unemployed	125,00€
BI / External PhD students	180,00€
Professionals / Postdocs	250,00€

BIODIV – Biodiversity, Genetics and Evolution (Ulisboa & UPorto)
BEAG – Biology and Ecology of Global Changes (Ulisboa & UAveiro)
SC – Sustainability Sciences (Ulisboa)
CFE – Centre for Functional Ecology

Scan the code to find more information and how to apply to this Advanced Course:



We are committed to a sustainable future.

Discover cE3c at ce3c.ciencias.ulisboa.pt and look for @ce3cresearch on

