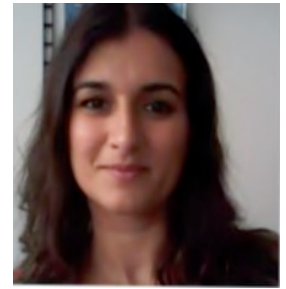


EUROPEAN  
CURRICULUM VITAE  
FORMAT



**Personal information**

**Name** Ana Lúcia Gomes Fonseca  
**Institution** FFCUL - Foundation Faculty of Sciences University of Lisbon in  
CCIAM – Center for Climate Change Impacts Adaptation & Modeling

**RESUME** Aiming to develop an understanding of local responses to accelerated climate change in the realms of culture/identity, sacred practices and symbolic behavior towards CC adaptation.

**WORK EXPERIENCE** Social Scientist, with a degree in Anthropology at FCSH - New University of Lisbon (1999) and a Masters in Sociology in the same institution (2001). Previous research have been focused on teens and youth social identities and delinquency. Have developed skills in training and social education in community-based projects. At BASE have been engaged in the preparation, implementation and analysis of participatory case study research. Experience in organizing conferences and workshops on Climate Change Adaptation.

**- FFCUL – CCIAM [ Center for Climate Change Impacts Adaptation & Modelling]**  
. Grant-holder Researcher at ClimAdaPT.Local, a project integrated into the ADAPT program, managed by the Portuguese Environment Agency (APA), co-financed by the EEA Grants (85%) and by the Portuguese Carbon Fund (FPC, 15%). The aim of the ClimAdaPT.Local project is to develop Municipal Strategies for Adaptation to Climate Change.

**- FFCUL – CCIAM [ Center for Climate Change Impacts Adaptation & Modelling]**  
. Grant-holder Researcher at EU FP7 research project "*Bottom-Up Climate Adaptation Strategies for a Sustainable Europe*" (**BASE**) that supports action for sustainable climate change adaptation in Europe.

**- FFCUL – CCIAM [ Center for Climate Change Impacts Adaptation & Modelling]**  
. Within the European Project FP7 CIRCLE2, supported the organization of two international conferences - in association with the FMO (EFTA) and Portuguese Environment Agency (APA), the **EEA Grants Conference** "*The Role of Water in Adaptation to Climate Change*" (Oct 2013) and "*The Adaptation Frontiers*" the CIRCLE2 project closing conference (Mar 2014).

**EDUCATION AND TRAINING**

2013 **Bootcamp IES powered by INSEAD**  
. Training in developing Social Entrepreneurship Projects

2011 **Certificado Competências Pedagógicas (CCP) - IEFP**  
. Pedagogical Skills Certificate for conducting training activities

2001 **Master in Sociology at the FCSH - UNL (New University of Lisbon)**

1999 **Degree in Anthropology at the FCSH - UNL (New University of Lisbon)**

**ORGANIZATIONAL SKILLS  
AND COMPETENCES**

Facilitator and promotion of participatory workshops (participatory research methodology) and stakeholders engagement towards climate change awareness and adaptation actions. Developed skills in training and social education of young people in various volunteer activities implemented in public schools and juvenile detention centers. Facilitator of individual sessions of **mentoring** and **coaching** with young students, that aim to establish and focusing personal objectives for a better school achievement.